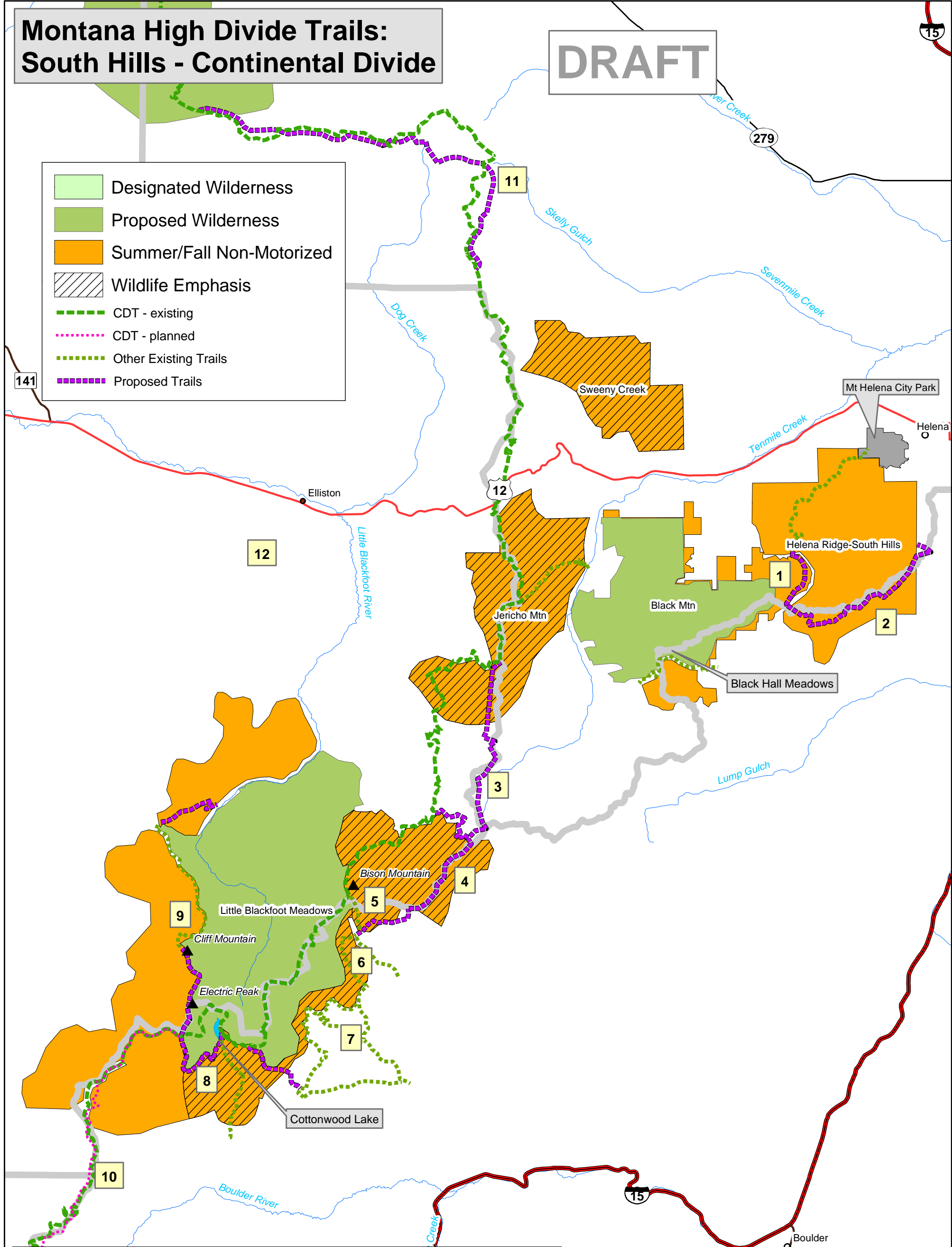


Montana High Divide Trails: South Hills - Continental Divide

DRAFT

Legend

- Designated Wilderness
- Proposed Wilderness
- Summer/Fall Non-Motorized
- Wildlife Emphasis
- CDT - existing
- CDT - planned
- Other Existing Trails
- Proposed Trails



High Divide Trails			
No.	Trail	Notes	Miles
1	"Ridge to Bridge" (Mt Helena Ridge to Brooklyn Bridge)	2007 field survey/2008 proposed construction	2.2
2	"Skihi" (Brooklyn Bridge to Tucker Gulch)	2009 proposed reconstruction	6.2
3	Jericho High Divide	new CDT - 2009 proposed	8.0
4	Josephine - Bison Mtn Loop	new CDT - 2008 planned	14.4
5	Joe Bowers	2007 restoration to 'quiet' single track	3.0
6	S Fk Basin Cr - Fox Cr	ATV use on S Fk Basin Cr	5.1
7	Red Rock Cr Loop	single track - limited OHV	9.0
8	Electric Peak - Cottonwood Lake	2008 proposed construction	7.7
9	Cliff Mountain Crest	2008 survey/2009-2010 proposed construction	10.5
10	Champion Pass - Electric Peak	new CDT - 2007 construction	10.7
11	Mullan Pass - Meyers Hill	new CDT - 2009 field survey	13.1
12	Elliston Loop		